

Archives

LD

1492

.D4

A2

1944

Ref

Archives LD 1492 .D4 A2 1944  
Ref

The Broom

7

*Ry*  
**DICARD**

Ref  
378.762  
✓  
1944  
C.3  
Storage

DELTA STATE UNIVERSITY



3 2277 00314 7168

*Ex Libris*

**DISCARD**

82437

A PARAGON  
PRODUCTION  
by  
The Paragon Press  
MONTGOMERY ALABAMA

Digitized by the Internet Archive  
in 2010 with funding from  
Lyrasis Members and Sloan Foundation

<http://www.archive.org/details/broom1944delt>

## Ex Libris





## COPYRIGHT

RUTH ORIDGE . . . . . Editor

DINKS KORNEGAY . . . . . Business Manager

THE

1944

BROOM

Published by the Students of

DELTA STATE TEACHERS COLLEGE

Cleveland, Mississippi

# FOREWORD

The charter for the establishment of the Mississippi Delta State Teachers College at Cleveland, Mississippi, was granted by the state legislature in April, 1924. Therefore, with this fact in mind, we, the staff of The 1944 BROOM, present the Twentieth Anniversary Edition of our annual.



# CONTENTS

COLLEGE

FEATURES

FACULTY

ORGANIZATIONS

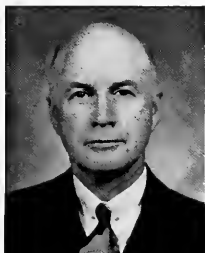
CLASSES

STUDENT LIFE



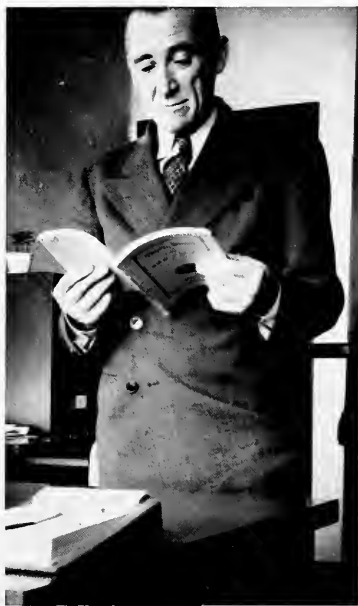


DR. YOUNG



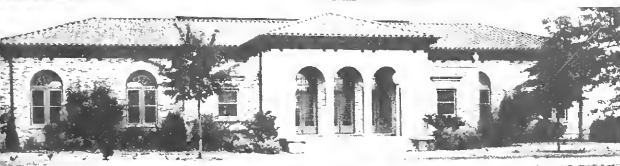
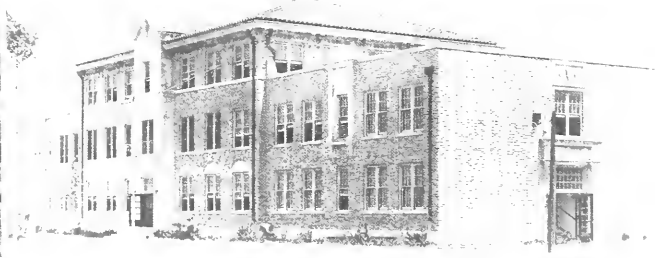
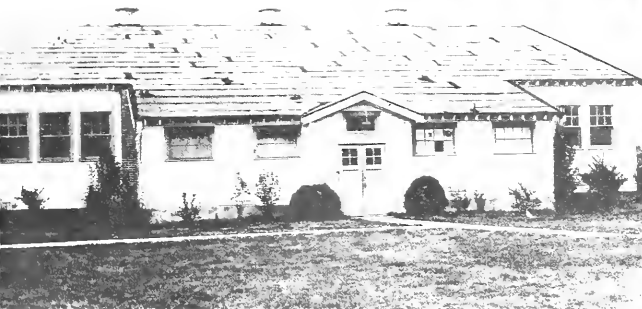
MR. WILLIAMS

To Dr. A. L. Young and to Mr. Wirt Williams, whose loyal service has strengthened the foundations of our school, and whose friendship and capable instruction have sent our graduates forth to successful careers.



## ALMA MATER

Oh, Delta State, we cling to the memory  
Of happy days we've spent,  
Of standards high, and of friendships dear,  
Making our life there something to treasure.  
We have come to sing the praises  
Of the old school we love best,  
Oh, hail to you, our dear Alma Mater,  
Oh, hail to old Delta State.



# THE COLLEGE





BROOM BUILDING

# MISSISSIPPI DELTA STATE TEACHERS COLLEGE

1924

1944

1924

April 9 Senate Bill 236, Chapter 284. Approved: An act to create and establish the Mississippi Delta State Teachers College.

1925

June 7 D. S. T. C. opened its doors for summer school, its first session. Members of the faculty: J. W. Broom, President; W. H. Zeigel, Dean; A. L. Young; W. A. Williams; Annie Caulfield.

Sept. 15 Formal opening of college with a faculty of eleven members and an enrollment of 123 students. Faculty: W. H. Zeigel; A. L. Young; W. A. Williams; Annie Prince Pittman; Mrs. Elizabeth Stamps; Julia Dale; Annie Caulfield; M. V. Frierson, Business Manager; Mrs. C. B. Frierson; Ruth McPherson, Dietitian; Frank Mitchell.

Green and White entered inter-collegiate athletics when Delta State's girl sextet met an Ole Miss girls' basketball team at Oxford.

1926

May J. W. Broom, first president of college, died.

Sept. 27 Second year of college began with new president, W. M. Kethley. New members of faculty: Georgia Lee Tatum, Lilla Wesson, Dr. Woodford White, T. H. McMillan, Laurie Doolittle.

Demonstration School opened in Hardee Hall basement.

Y. W. C. A. organized. Girl's basketball team became famed "Rabbit Foot Squad."

Oct. 10 Cleveland Hall was dedicated.

Oct. 27 First issue of *Miss Delta* was published as a bi-weekly newspaper recording the life of the college. Molly Bedwell, a student, submitted the winning name for the publication which was printed in a form to be collected into a binder at the end of the year as the annual. William McCain was first editor of *Miss Delta*; Kenneth Tucker was first business manager.

First student government officers were elected with Dorothy Rice as president.

Dec. 16 In a memorial service in chapel, the college received portrait of late president from his widow, Mrs. J. W. Broom.

1927

May D. S. T. C. debaters won unanimous decision over West Tennessee Teachers College. Delta State team was made up of Marguerite and Elizabeth Zeigel.

Sept. 23 Third year of college began. First new building, Cleveland Hall, was opened. New professors that year were Evelyn Hammett, Mary Catherine Craig, Etta Eckles, Mary J. Haynes, dietitian, Dr. Carey C. Dobbs and Virginia Thompson, secretary to president.

1928

Jan. To meet needs of growing college, the state legislature appropriated \$365,000 for the erection of three buildings, Broom Memorial Administration Building, Ward Hall, and Scott Dining Hall.

The Senior Class issued first annual, *The Broom*, named for the first president. Cora Ervin was editor.

May 31 First graduation exercises. Twelve women received B. S. Degrees in Education. Mollie Bedwell, valedictorian, received first diploma.

Sept. Plans for new buildings underway. New professors: Grace Gaw, Fine Arts; Mary Gresham, Home Economics; Louise Bourgeois, Physical Education; Ruth Rogers, first Kindergarten teacher; Mrs. Lizzie Exum, Matron, Hardee Hall; Coach Herman Zimoski. First state championship in women's basketball won this year.

Dec. 7 D. S. T. C. received Associate Rating in Southern Association of Colleges and Secondary Schools.

May 31 Second annual commencement. Twenty-eight graduates received B. S. Degrees in Education.



## 1929

Sept. 21 Ward Hall and Scott Dining Hall opened for business. New faculty members were Katie Durelle Mauldin, Advisor to Women; Gertrude Eckford, Supervisor to first high school practice teaching (at Boyle); Theodore Burdine, Science. Number students enrolled was 485 for the twelve months.

Dec. 13 Dedication of Broom Memorial Administration Building, B. F. Ward Dormitory for Women, and Charles Scott Dining Hall.

## 1930

Jan. 1 Classes and offices were moved into new administration building.

July 24 W. M. Kethley re-elected president of Delta State by Board of Trustees of Mississippi Universities and Colleges.

Sept. 22 New session opened. New members of faculty: K. L. Daugherty; Maud Cain; Marian Shumate; Mary Margaret Fugler; May Hickey; Elizabeth Garth; Annetta McDevitt; Joe McCain, business manager; Dorothy McClain; Mrs. Crawley, matron, Cleveland Hall; Myra O'Brien, Librarian; Gladys Castle, secretary to the dean.

Delta Playhouse, to sponsor and direct plays, was organized by Miss Fugler of the English department. Maxine Boggan was the first president.

Dec. 4 Delta State was granted full membership in Southern Association of Universities and College at Atlanta meeting when all other state institutions of Mississippi were dropped.

During winter quarter a mathematics conference met here. Representatives from Louisiana and Mississippi colleges attended.

Delta State had largest twelve months' enrollment of school's history—574.

## 1931

Jan. 18 President Kethley made president of Mississippi Valley Conference.

Mar. 4 D. S. T. C. basketball team won championship of Mississippi Valley Conference.

April 17 Delta State debators won unanimous decision over State Teachers College, Hattiesburg.

July 4 First group of children to complete six year course in Demonstration School received certificates.

Sept. 23 Hon. Thomas L. Bailey, Speaker of Mississippi House of Representatives, addressed opening assembly.

New faculty members: Ethel Cain, Physical Education; R. L. Caylor, Science; Ethel Gillespie, Matron; Austin Shipman; Maxine Boggan; Alvin Chapman. Louise Sigler was named president of first student cabinet. Point system was installed.

## 1932

Feb. 19 First Carnival Ball, presented by *The Broom* staff was held in gym. Walter Riley, King; Laurette Fleming, Queen.

April 21 New constitution of Student Government Association of D. S. T. C. approved in assembly.

May 13 Dr. George Washington Carver lectured and presented exhibit in auditorium. George Washington Bi-Centennial Pageant staged in front of Taylor Hall. Largest nine months' enrollment in history of Delta State—432.

Sept. 19 New session began. Additions to the faculty were Chauncery King, Music; Emerald Ballard, English; and Henry Allen, Coach.

## 1933

April 14 President Kethley spoke over WJDX, Jackson, Miss., in one of a series of broadcasts by Mississippi Education Association in interest of public education.

April 29 First Freshman Prom was inaugurated.

May Fifteen hundred acclaimed pageant, "Springtime", on athletic field. Largest class to date in history of Delta State graduated with 57 members.

## 1934

Jan. A leave of absence was granted Professor Austin L. Shipman of Social Science department for world tour with geographical party under leadership of Henrick Van Loon.

Lorado Taft, America's foremost sculptor, presented lecture and demonstration in lyceum number.

May 17 Pageant, "Dances of the People", was presented.

Sept. Katie Mauldin, Dean of Women, was made registrar. New members of faculty were Sarah Harrell, Dean of Women; Inez Wells, Commerce; Marietta Downs, financial secretary; and Mrs. Baxter Wilson, Demonstration School.

Delta Singers was organized this session.

#### 1935

May Alpha Psi Omega was granted charter at D. S. T. C.

June Kate Smith, first nurse of college, opened hospital on second floor of Taylor Hall.

July College mourned death of Mrs. Lizzie Exum, Matron of Hardee Hall.

Sept. Opening of new session. Jane Oliver, Carol Brumby, Frances Blakeney, Dr. C. J. Craven joined faculty. Mrs. W. A. Carpenter and Billy came to stay in Hardee Hall.

Dec. 13 Governor Mike Conner delivered address while visiting on campus.

#### 1936

Jan. 24 Delta Singers broadcast over WSM, Nashville.

March Delta State was host to annual meeting of Mississippi Intercollegiate Forensic Association, and its team won second place in the debate tournament. Miss Evelyn Hammett of English department was elected president of the Association.

April 23 Ted Shawn, internationally famous creator and interpreter of dance themes, brought ensemble of men dancers to D. S. T. C.

May 21 Grecian pageant, "Olympia Through the Ages" was presented in front of Scott Dining Hall.

The new swimming pool was opened for use in the summer of 1936.

Sept. Edward Sanderson, Science; Alex Dickson, Coach; and Nell Wynn, Music, came to faculty. Women's Athletic Association was founded this year with Mary Alice Golding as its first president.

New Delta Field stadium was opened.

Women's national rating committee awarded certificates to nine in basketball officiating.

Nov. 23 Season ended for D. S. T. C.'s Statesmen with 5 victories and 4 losses. Charles "Chuck" Thomas, fullback, had scored 89 points in 5 games and was believed to be the nation's leading college scorer.

#### 1937

May "Folk Festival", a pageant, was staged in stadium by Physical Education Department assisted by Boyle and Cleveland consolidated schools.

During the summer, the first annual college picnic was held on Mississippi River.

Sept. Mary Royce Eckles, C. V. Cassady, Dr. Tom Perrin, Edna Nunnery and Lilyan Colson joined faculty.

Plans were made for new campus building.

Delta State's W. A. A. was host to the state organization.

Oct. A new nurse, Ruth Steen, was appointed.

Nov. 6 Reunion of Rabbit Foot Squad was held on campus at Home Coming.

#### 1938

Mar. 2 Miss Laurie Doolittle, Director of Hill Demonstration School, died. Funeral services were held in Broom Auditorium.

May The pageant, "Pandora", was presented.

Sept. The new building, Doolittle Annex, having been dedicated to Miss Doolittle, was opened for use to the science and music departments.

Sarah Hunt, Physical Education; Elizabeth Coats, dietitian; Douglas Allen, English; Dr. S. T. Sanders, Mathematics; Lanier Pratt, Languages, and Elizabeth Zeigel were added to faculty.

#### 1939

During the Winter quarter, six students were named to Who's Who Among Students in American Universities and Colleges, marking the first year of this tradition.

Elizabeth Meeks, Paul McGee, and Lucy Black were new faculty members. Elizabeth Campbell was appointed dietitian, and Clay Hicks was made secretary in Business Office.

#### 1940

Smith-Hughes funds made available to college. Plans for Practice Home were begun.

National Inter-Collegiate basketball tourney in Kansas City was attended by the college basketball team. The team placed third and Theron Blackledge was first Mississippian to be named All-American.

"Mississippi Flags" was presented on new pageant field by students of the college and the demonstration school.

Sept. Dr. G. A. Ward, R. A. Pulliam and Elizabeth Dakin join faculty.

Roberts Memorial Library and Whitfield Gymnasium opened for use in regular session.

Scribes Club was organized and sponsored by Miss Hammett.

#### 1941

Sept. New Home Management house was added to the Home Economics department. Minnie Patton was made acting head of the department.

J. D. Miller, business manager; D. T. Oaks; Laura Wilkerson and F. G. Wallick also came to faculty.

Dec. Declaration of war. Many male students were inducted into Military service. Paul McGee left faculty for Army.

#### 1942

Jan. Alice Collins joins faculty as language instructor.

May The Spring pageant "Neath Starry Skies" was presented.

June Ruth Steen joined Army Nurse Corps.

Sept. New faculty members were Dr. J. R. Johnson, Science and Mrs. Jeff Miller, secretary in Business Office. Former faculty members Mrs. Mary Catherine Craig Gerard, music, and Mrs. Marguerite Zeigel Hedburg, mathematics, were welcomed back.

Oct. Representatives of Army-Navy-Marine Corps Presentation Board visited campus to enlist recruits.

#### 1943

Jan. War conditions necessitated banning inter-collegiate sports; these were replaced by intramural games.

Nell Briscoe, commerce, and Roy Wiley, Science, were added to faculty.

Feb. 13 Victory Ball was presented as climax to bond drive, during which the total value of bonds sold by Delta State was \$40,000.

March 10 Coach Alex Dickson was made president of the National Association of Intercollegiate Basketball during the association's annual National Tournament in Kansas City.

April 2 W. A. A. C. recruiters visited campus.

April 20 Mrs. Elizabeth Stamps, in Home Economics department since 1925, was accepted by W. A. A. C.

May 12 Two thousand people attended the eighth annual meeting of the Delta Council held in the Whitfield gymnasium. Governor Sam Jones of Louisiana, Jeff Williams, and A. G. LeTourneau were guest speakers.

Sept. 7 J. W. Bedwell, Dorothy Forsythe, Nell Mims, Martha Schreiner, Lucille England, Martha Myers, Louise Sublette Perry, and Eleanor Walters joined faculty. Fannie White was named dietitian.

The names on Delta State's service roll numbered 254.

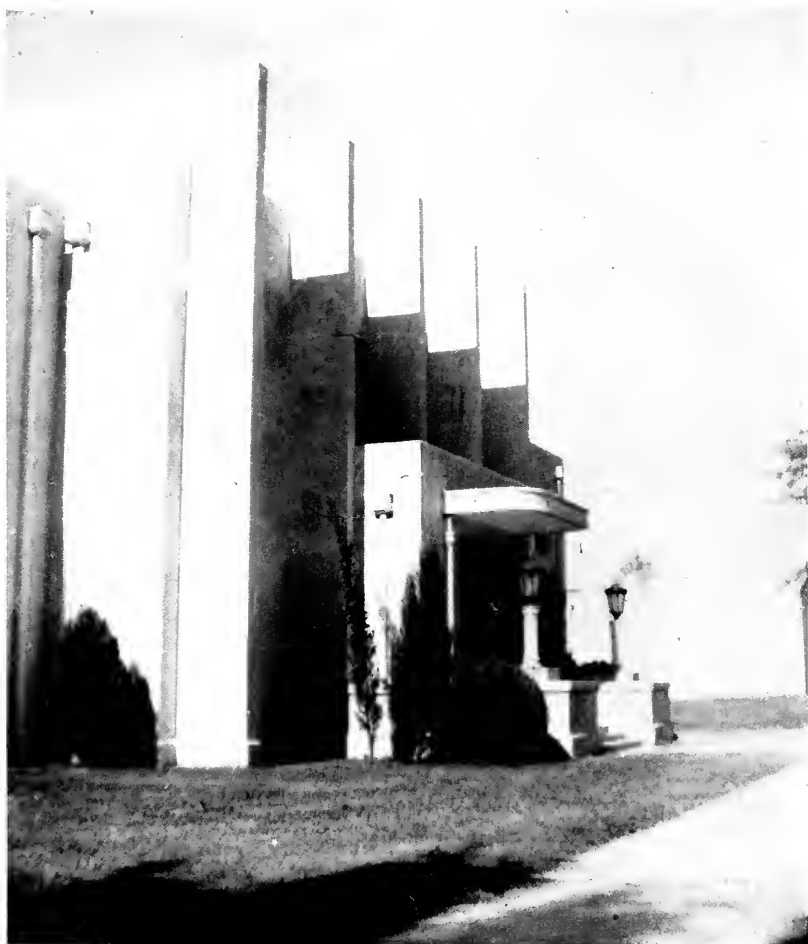
Nineteen buildings made up college campus.

#### 1944

Jan. Plans were begun for building a college laundry.

Feb. "The Little Foxes", a choral group directed by Senior music major, Minnie Fox, presented recital and made public appearances in neighboring towns.

Mar. 13 Dr. Emil Ludwig, world famous lecturer and biographer, spoke in college auditorium. His subject was "What Sort of Peace Shall We Make With Germany?"



WHITFIELD GYMNASIUM



WARD  
HALL



ROBERTS MEMORIAL LIBRARY



SCOTT DINING HALL

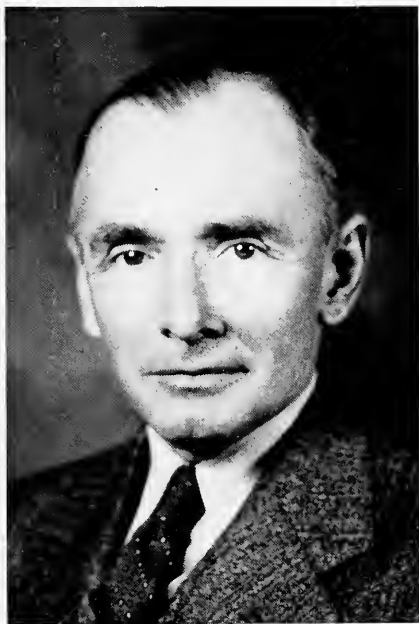


# FACULTY





WILLIAM MARION KETHLEY, A. M.



## THE PRESIDENT

The college which you know today with its efficient and pleasing campus, its handsome buildings, and well planned curricula is a very different one from the college which opened its doors to students twenty years ago. Notwithstanding all the changes which modern life has brought about there are the same fundamental values upon which the college was founded and which we strive to continue today. Among these values are truth, virtue, honesty of purpose, and hard work. You, who enjoy the blessings which Delta State Teachers College offers today, have the responsibility for continuing these values in the life of your school.

W. M. KETHLEY



WILLIAM HENRY ZEIGEL, Ph.D

## DEAN OF FACULTY

Rich in the heritage of twenty years, the Delta State Teachers College is but at the threshold of greater achievements. Let the college now take firm hold on opportunities that beckon forward. Henceforth our loved school will grow in influence and power as the years, score on score, are added to this its twentieth anniversary.

WILLIAM H. ZEIGEL.



## THE FACULTY

WIRT ALFRED WILLIAMS, A. M.  
Head of Department of the Social  
Sciences.

KENNETH L. DAUGHRITY, Ph.D  
Head of Department of Languages  
and Literature.

RICHARD LEE CAYLOR, M. A.  
Acting Head of Department of  
Science.

ETHEL CAIN, Ed.M.  
Acting Head of Department of  
Health and Physical Education.

GRACE GAW, M. A.  
Acting Head of Department of Art

NELL WYNN, M.Mus.  
Acting Chairman, Department of  
Music.

MINNIE PATTON, M. S.  
Acting Head of Department of Home  
Economics.

ELEANOR WALTERS, M. A.  
Acting Head of Department of  
Mathematics.

JANE R. OLIVER, M. A.  
Acting Director of Elementary Dem-  
onstration Schools.

J. WALLACE BEDWELL, M. A.  
Acting Chairman of Commercial  
Education.



## THE FACULTY

ALBERT LEON YOUNG, Ph.D.

Department of Education

GEORGIA LEE TATUM, Ph.D.

Department of the Social Sciences

EVELYN ALLEN HAMMETT, M. A.

Department of Languages and Literature.

KATIE DURELLE MAULDIN, M. A.

Registrar

JAMES R. JOHNSON, Ed. D.

Department of Science

MRS. PAUL R. GERARD

Department of Music

DEWITT TALMADGE OAKS, M. A.

Department of Education

MYRA O'BRIEN, A. B., B. L. S.

Librarian

ROY LEE WILEY, M. A.

Department of Science





## THE FACULTY



MAUD CAIN, M. A.  
Elementary Demonstration Schools

MARY ROYCE ECKLES, M. A.  
Elementary Demonstration Schools

ELIZABETH MEEKS, M. A.  
Secondary Demonstration Schools

ELIZABETH ZEIGEL, M. A.  
Secondary Demonstration Schools

LUCILLE ENGLAND, B. S. in Ed.  
Elementary Demonstration Schools

MARTHA MYERS, B. S. in Ed.  
Elementary Demonstration Schools

MARTHA SCHREINER, M. A.  
Department of Languages and Literature.

NELL R. MIMS, M. A.  
Department of Home Economics

LOUISE SUBLETTE PERRY, A. M.  
Department of Languages and Literature.



## THE FACULTY

ETHEL GILLESPIE

Advisor to Girls

ETHEL CRAWLEY

Matron

MRS. W. A. CARPENTER

Matron

DOROTHY FORSYTHE, M. S.

Department of Home Economics

FANNIE WHITE, A. B.

Dietitian

JEFF D. MILLER

Financial Secretary

VIRGINIA THOMPSON, A. B.

Secretary to President

GLADYS CASTLE, B. S.

Secretary to Dean of Faculty

ELIZABETH DAKIN, B. L. S., B. A.

Assistant in Library





Graduating Class, 1928



# CLASSES







## SENIOR CLASS

### OFFICERS

MARJORIE CROOK . . . . . President  
Parchman, Mississippi

MARGIE SNIPES . . . . . Vice-President  
Lula, Mississippi

GRACE KELLY . . . . . Secretary-Treasurer  
Itta Bena, Mississippi

DR. K. L. DAUGHRITY . . . . . Sponsor



## SENIOR CLASS

SADIE RUTH ABERNATHY . . . Leland  
Elementary Education

Women's Honor Council, Civic Chairman,  
Vice President, President; Student Cabinet;  
Elementary Club, President; Delta Singers; Y.  
W. C. A., Secretary, Vice President; B. S. U.  
Cabinet, Y. W. A. President, Vice President;  
Room Teacher; Who's Who Among Students  
in American Universities and Colleges.

BONNIE KATE BLOUNT . . . Isola  
English

Transfer Mississippi State College

LAURA BYRD CAMPBELL . . West Point  
Physical Education

W. A. A., Y. W. C. A., Delta Playhouse,  
Pageant, Miss Delta Staff, Y. P. C., Modern  
Dance Group.

MILDRED VIRGINIA CASTLE . Cleveland  
Social Science  
W. A. A.

MARJORIE CROOK . . . Parchman  
English

Women's Honor Council, Secretary; Delta  
Singers; French Club; Spanish Club, Secretary;  
Chemistry Club; Vice President of Junior  
Class; President of Senior Class; Victory Queen;  
The Little Foxes; Y. W. C. A.; Most Beautiful  
Girl.

RUTH PRYOR DOOLITTLE . . . Shelby  
Elementary Education

Women's Honor Council, House President;  
Elementary Club, Vice President; Y. W. C. A.;  
Home Ec. Club; B. S. U. Council, Vice Presi-  
dent; Y. W. A., President; Nature Club; Inter  
Church Council; Room Teacher; Who's Who  
Among Students in American Universities and  
Colleges.

GEORGIA FIGG . . . Courtland  
Commerce

Delta Playhouse; Y. W. A.; Y. W. C. A.;  
Nature Club; Math Club; Spanish Club; Page-  
ant; Miss Delta Staff; Most Beautiful Girl.

MINNIE FOX . . . Charleston  
Public School Music, Elementary Education

Delta Singers; Band, Assistant Director; Di-  
rector of Little Foxes; Elementary Club, Re-  
porter, President; Spring Pageant Music; Broom  
Staff, Photographer, Assistant Editor; Student  
Cabinet; Maid in Victory Ball; Wittiest Girl;  
Y. W. C. A.; Y. W. A.

## SENIOR CLASS

GERRY GOODSON . . . . . Baldwyn  
Commerce, English

Miss Delta Staff; Delta Playhouse, Nature Club; Spanish Club.

ELIZABETH HARDIN . . . . . Pontotoc  
Home Economics

Home Economics Club, President; Y. W. A., Mission Study Chairman, Secretary; Y. W. C. A.

JANE HATHORN . . . . . Norfolk, Va.  
French, English

Miss Delta, Senior Editor; Delta Playhouse, Vice President; Alpha Psi Omega; Play Tournament; Scribes Club; Literary Festival; French Club; Spanish Club, President; Band; Spring Pageant.

EDNA HICKS . . . . . Pontotoc  
Home Economics  
Home Economics Club.

PEARL HITCH . . . . . Leland  
Public School Music

Delta Singers, Business Manager, President; Delta Playhouse, Alpha Psi Omega; Y. W. A., B. S. U. Council, Vice President; Little Foxes; Y. W. C. A.

GRACE ELIZABETH KELLY . . . . . Itta Bena  
Public School Music

Band, Assistant Director; Most Popular Girl; All Star Badminton, Volley Ball; Zookus; Spring Pageant; Delta Playhouse, Secretary; Alpha Psi Omega; Secretary of Senior Class; Women's Honor Council; Y. W. A.; Y. W. C. A.; Broom Staff; Play Tournament; Miss D. S. T. C.; Who's Who Among Students in American Universities and Colleges.

DORRIS KING . . . . . Meadville  
Home Economics

Home Economics Club, Vice President; Y. W. C. A.

DINKS KORNEGAY . . . . . West Point  
Science

Delta Playhouse, President; Broom Staff, Photographer, Business Manager; Student Cabinet, Secretary, Treasurer; Y. W. C. A.; Y. W. A.; Miss Delta Staff; Student Assistant in Science; Gooch Scholarship; Alpha Psi Omega, Worthy Business Manager.





## SENIOR CLASS

NANCY LEA LEIGH . . . . . Moorhead  
Elementary Education

Elementary Club, Vice President; W. A. A.,  
President; Y. W. C. A., Secretary; Y. W. A.;  
Room Teacher.

MRS. R. H. NASON . . . . . Belzoni  
Home Economics  
Home Economics Club

PEGGY O'NEAL . . . . . Clarksdale  
French, English  
French Club, Spanish Club.

RUTH ORIDGE . . . . . Lexington  
Art, English

Delta Playhouse; Art Club; Band; Women's  
Honor Council; Most Stylish Girl; Miss Delta  
Staff; Broom Staff, Art Editor, Assistant Editor,  
Editor of 1944 Broom; Who's Who Among  
Students in American Universities and Colleges.

DOT REIFERS . . . . . Okolona  
Home Economics

W. A. A.; Home Economics Club, Secretary  
and Treasurer.

NELL ROBERTS . . . . . Leland  
Mathematics, Science

Women's Honor Council; Best Girl Dancer;  
Band; Orchestra, Delta Collegians; Spanish  
Club; French Club; W. A. A.; Delta Play-  
house; Math Club; All Star Basketball; All Star  
Soccer; Play Tournament; Little Foxes.

FRANCES RYALS . . . . . Hollandale  
Commerce, Mathematics

Student Cabinet, President; Miss Delta, Man-  
aging Editor; Spanish Club, President; W. A.  
A.; Y. W. C. A.; Wesley Foundation; Element-  
ary Club; Delta Playhouse; The Broom Staff;  
Math Club; Commercial Club; Who's Who  
Among Students in American Universities and  
Colleges.

CONNIE SCOTT . . . . . Cleveland  
Commerce, Social Science

Math Club, Delta Playhouse, Alpha Psi  
Omega, Miss Delta Staff, Y. P. C., Student  
Cabinet, Scribes Club, Pageant, Who's Who  
Among Students in American Universities and  
Colleges.

## SENIOR CLASS

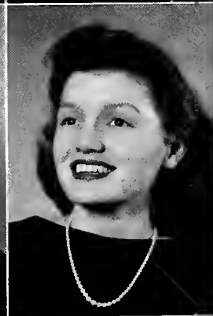
MARGIE SNIPES . . . . . Lula  
English Social Science

Delta Playhouse, Vice President, Stage Manager, Play Tournament; Alpha Psi Omega, President; Secretary and Treasurer of Junior Class; Vice President of Senior Class; Miss Delta, Senior Editor; Pageant; Y. W. A.; Zookus; Y. W. C. A.; Student Assistant, Speech Department; Most Versatile Girl; Who's Who Among Students in American Universities and Colleges.



MARGARET SORRELLS . . . West Point  
Physical Education

W. A. A., Delta Playhouse, Pageant, Miss Delta Staff, Y. W. C. A., Y. P. C., Modern Dance Group.



ETHEL MARIE SUMRALL . . . Cleveland  
Commerce

RUTH TAYLOR . . . . . Morton  
English, Art

Delta Singers; Math Club; Scribes Club; Spring Pageant; All Star Volley Ball; Broom Staff, Art Editor; Maid of Victory Ball.



REA TWEATT . . . . . Cleveland  
Elementary Education

Delta Playhouse; Elementary Club; Secretary, Treasurer of Freshman Class; Secretary, Treasurer of Sophomore Class; Most Beautiful Girl.

FRANCES E. WILKERSON . . Friars Point  
History, Social Science

Scribes Club; Spanish Club; Y. W. C. A.; Wesley Foundation.



## JUNIOR CLASS

### OFFICERS

VERA SMITH . . . . . President  
Shaw, Mississippi

CLAIRE LOWRY . . . . . Vice-President  
Boyle, Mississippi

JOHN FRAISER . . . . . Secretary-Treasurer  
Minter City, Mississippi

MISS ELIZABETH ZEIGEL . . . . . Sponsor

## JUNIOR CLASS

R. TODD AGNEW . . . . . Baldwyn

NELL BARHAM . . . . . Crenshaw

DOT BARKEMEYER . . . . . West Point

NORMA BLAYLOCK . . . . . Randolph

ALICE CAUSEY . . . . . Cleveland

KATHRYN DENMAN . . . . . Charleston

DOROTHY DOOLITTLE . . . . . Slate Springs

ERMA FOSTER . . . . . Big Creek

JOHN FRAISER . . . . . Minter City

JUNE GARDNER . . . . . Clarksdale

LUCILLE HARRIS . . . . . Skene

ELIZABETH ANN HARTHCOCK . . . Tchula





## JUNIOR CLASS

LOUISE KIMBROUGH . . . . Lake Washington

VIRGINIA KING . . . . . Inverness

MYRA LANGSTON . . . . . Dublin

SARA LOUISE LOGAN . . . . Hohenlinden

CLAIRE LOWRY . . . . . Boyle

MARY FURR NEWELL . . . . . Tupelo

KITTY ODOM . . . . . Star

WILMA PITTMAN . . . . . Boyle

VERA SMITH . . . . . Shaw

RACHEL STUBBS . . . . . Utica

CHARLES TUCKER . . . . . Clarksdale

EDITH TURNER . . . . . Marks

CHARLENE WEBB . . . . . Shelby

KATHLEEN WOOD . . . . . Benton





## SOPHOMORE CLASS

### OFFICERS

CATHERINE WILLIAMS . . . . . President  
Cleveland, Mississippi

BILLIE ROSSIE . . . . . Vice-President  
Shaw, Mississippi

CATHERINE WATSON . . . . . Secretary-Treasurer  
Rolling Fork, Mississippi

MR. WIRT WILLIAMS . . . . . Sponsor



## SOPHOMORE CLASS

BENNIE BEACH . . . . . Cleveland

TINCY BLOUNT . . . . . Isola

MARY EMMA BOGGAN . . . . . Hickory

ELSIE BOSCHERT . . . . . Cleveland

ELLEN BRADLEY . . . . . Cleveland

CAMILLE BROCATO . . . . . Merigold

WILLIE RUTH BURNETT . . . . . Clarksdale

VIRGINIA DAVIS . . . . . New Albany

BETTYE BROOKS FOREMAN . . . . . Schlater

GRACE GARRICK . . . . . Money

## SOPHOMORE CLASS

JANIS HATHORN . . . . Norfolk, Va.

MIRIAM HAWKINS . . . . . Beulah

ANN HEDDERICK . . . . . Holly Springs

BOBBIE NELL HENRY . . . . . Carthage

ANN JAMES . . . . . Itta Bena

BARBARA JOHNSON . . . . . Cleveland

BETTY KILPATRICK . . . . . Cleveland

LILLYE LOVE KIMBROUGH . . . . . Leland

BETTY JEAN LANG . . . . . Nitta Yuma

GERRY MARBLE . . . . . Leland





## SOPHOMORE CLASS

DOROTHY PIGG . . . . . Greenwood

CHARLES REID . . . . . Greenville

EUNICE RICE . . . . . Doddsville

BILLIE ROSSIE . . . . . Shaw

EMMA LOU RUSTIN . . . . . Benoit

PHYLLIS RYALS . . . . . Hollandale

SUE TIMS . . . . . Boyle

CATHERINE WATSON . . . . . Rolling Fork

CATHERINE WILLIAMS . . . . . Cleveland

ANNIE GLENN WILLIAMS . . . . . Benton



## FRESHMAN CLASS

### OFFICERS

BILLY SMITH . . . . . Shaw, Mississippi . . . . . President

KITTY McREYNOLDS . . . . . Hushpuckena, Mississippi . . . . . Vice-President

JOANNE CHORLEY . . . . . Sledge, Mississippi . . . . . Secretary-Treasurer

MRS. PAUL R. GERARD . . . . . Sponsor



## FRESHMAN CLASS

BETTY ALDRIDGE  
Cleveland

ELIZABETH ALSTON  
Cleveland

JUANITA BOYKIN  
Catchings

MARGARET BROKAW  
Charleston

MARY ANN BROWN  
Cleveland

MARY SUE BROWN  
Cleveland

HARRIET CAUSEY  
Cleveland

MABLE CAUSEY  
Terry

JOANNE CHORLEY . . . . Sledge

RUSSELL CRUTCHER . . . . Shaw

JOYCE DENMAN . . . . Charleston

BILL GARDNER . . . . Greenwoow

ELIZABETH GARDNER . . . . Leland

JULIA GREGORY . . . . Hollandale

EMMA LEE HAUFF . . . . Clarksdale

GLORIA HENRY . . . . Pace

## FRESHMAN CLASS

IZORA HILLIARD  
Nitta Yuma

MARY ANN HORTON  
Cleveland

MARTHA ANN JEPSON  
Sledge

TEDDY JOHNSON  
Leland

SUSIE LEGGETT  
Dublin

JAMES LITTON  
Cleveland

HOPE MAXWELL  
Belzoni

PEGGY McKEE  
Morgan City



KITTY McREYNOLDS . . . Hushpuckena

MARGARET MILAN . . . Charleston

LAURA HELEN MOSELEY . . . Cleveland

VIRGINIA NANCE . . . Ripley

WILLOLA NASON . . . Belzoni

HALE NORWOOD . . . Drew

BETTY OAKMAN . . . Panther Burn

VIOLA PARKS . . . Cleveland



## FRESHMAN CLASS

RUTH PEEPLES  
Eupora

LENA MAE RAY  
Bellefontaine

ZILPHA REESE  
Tupelo

ROBERT SIMPSON  
Cleveland

CLAIRE SLAY  
Ruleville

BILLY SMITH  
Shaw

JOYCE SORRELL  
Belzoni

MARGARET STARNES  
Drew

MARGARET STILES . . . . Swiftown  
GLORIA STREETE . . . . Sardis  
LOUISE STUBBLEFIELD . . . Indianola  
MELVA JEAN TAYLOR . . . . Marks

MATTIE UPCHURCH . . . . Inverness  
EVELYN VAUGHN . . . . Greenwood  
VIOLET WACHTER . . . . Merigold  
CHARLCIE WILLIS . . . . Clarksdale





# FEATURES





GRACE KELLY

MISS D. S. T. C.



MARJORIE CROOK

BEAUTY AT



VIRGINIA KING



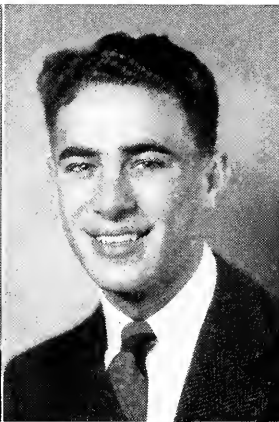
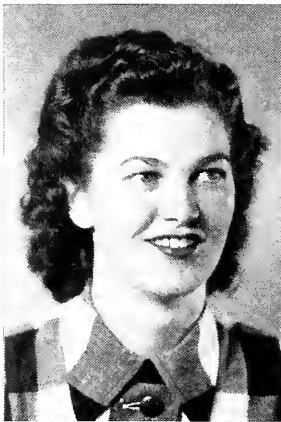
KATHLEEN WOOD

Most Popular Girl

NANCY LEIGH

D. S. T. C.

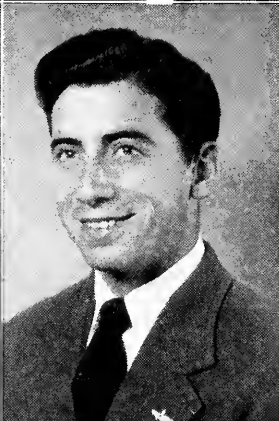




# WHO'S

CLAIRE LOWRY  
Most Charming Girl

CHARLES TUCKER  
Most Popular Boy



MARGIE SNIPES  
Most Versatile Girl

BENNIE BEACH  
Most Versatile Boy



VERA SMITH  
Most Popular Girl Athlete

MARY EMMA BOGGAN  
Most Intellectual Girl

# WHO

NELL ROBERTS  
Best Girl Dancer

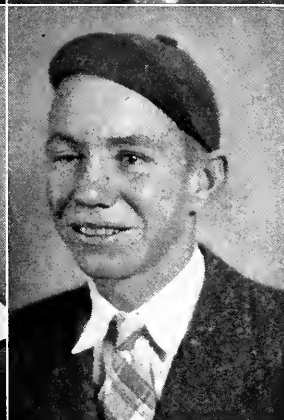
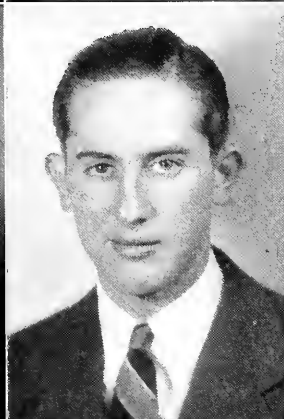
NELL BARHAM  
Wittiest Girl

RUTH ORIDGE  
Most Stylish Girl

JOHN FRAISER  
Best Dressed Boy

MARTHA ANN JEPSON  
Most Typical Freshman Girl

HALE NORWOOD  
Most Typical Freshman Boy





## WHO'S WHO AMONG STUDENTS IN AMERICAN UNIVERSITIES AND COLLEGES

Sadie Ruth Abernathy

Frances Ryals

Ruth Doolittle

Connie Scott

Grace Kelly

Margie Snipes

Ruth Oridge

Charles Tucker





CLASSICAL CLUB

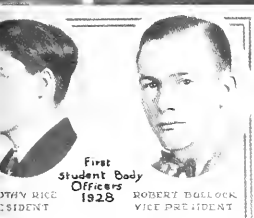
Organized  
1928



1928



First  
Broom Staff  
1928



First  
Student Body  
Officers  
1928

ROBERT DULOCK,  
VICE PRESIDENT



DOZOTHY McCLAIN  
REC'D - TREAS.

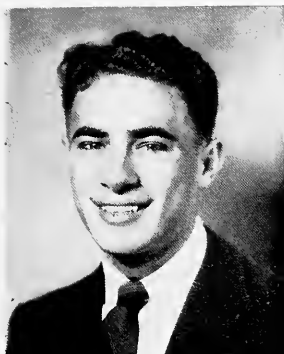


First BROOM Staff 1929



# ORGANIZATIONS





CHARLES TUCKER  
President  
Student Body



FRANCES RYALS  
President  
Student Cabinet



## STUDENT CABINET

FRANCES RYALS . . . . .	President
CATHERINE WILLIAMS . . . . .	Vice President
DINKS KORNEGAY . . . . .	Secretary, Treasurer

Sadie Ruth Abernathy  
Minnie Fox

Vera Smith  
Charles Tucker

## THE HONOR COUNCILS



### MEN'S HONOR COUNCIL

CHARLES TUCKER . . . . . President  
 BILLY SMITH . . . . . Vice President  
 JOHN FRAISER . . . . . Secretary, Treasurer  
 MRS. W. A. CARPENTER . . . . . Sponsor



### WOMEN'S HONOR COUNCIL

SADIE RUTH ABERNATHY . . . . . President  
 CLAIRE LOWRY . . . . . Vice President  
 MARJORIE CROOK . . . . . Secretary, Treasurer

Nell Barham  
 Mary Emma Boggan  
 Ruth Doolittle  
 Elizabeth Gardner  
 Grace Kelly  
 Ruth Oridge  
 Billie Rossie  
 Phyllis Ryals  
 Catherine Williams

## DENOMINATIONAL GROUPS

### WESLEY FOUNDATION

VIRGINIA KING . . . . . President  
 BETTY OAKMAN . . . . . Vice President  
 BETTY ALDRIDGE . . . . . Secretary, Treasurer

### PROGRAM COMMITTEE

June Gardner  
 Mary Furr Newell  
 Dorothy Pigg

### MEMBERSHIP COMMITTEE

Frances Ryals  
 Dorris King  
 James Litton  
 Eleanor Walters, Faculty Sponsor

### THE B. S. U. COUNCIL

MARY EMMA BOGGAN . . . . . President  
 CHARLEEN WEBB . . . . . 1-Vice President  
 SADIE RUTH ABERNATHY—2-Vice President,  
 Devotional Director

PEARL HITCH—3-Vice President, Social Director

RACHEL STUBBS . . . . . Secretary, Treasurer  
 CHARLES TUCKER—Baptist Student Representative

RUTH DOOLITTLE . . . . . Y. W. A. President  
 LUCILE HARRIS . . . . . B. T. U. President  
 NAT MAYHALL . . . . . Sunday School President  
 MR. R. L. CAYLOR . . . . . Faculty Sponsor  
 CHARLES TREADWAY, TH.D . . . . . Pastor

### Y. P. C.

ALICE CAUSEY . . . . . President  
 ROBERT SIMPSON . . . . . Vice President  
 HARRIET CAUSEY . . . . . Secretary, Treasurer

Todd Agnew  
 Norma Blaylock  
 Margaret Brokaw  
 Elizabeth Gardner  
 Mary Anne Horton  
 Ann James  
 Betty Kilpatrick  
 Margaret Milam  
 Virginia Nance  
 Connie Scott  
 Margaret Sorrells  
 Margaret Stiles





## HOME ECONOMICS CLUB

ELIZABETH HARDIN . . . . .	President
DORRIS KING . . . . .	Vice President
DOROTHY REITERS . . . . .	Secretary, Treasurer
MISS MINNIE PATTON . . . . .	Faculty Sponsor

Norma Blaylock  
 Elsie Boschert  
 Willie Ruth Burnett  
 Erma Foster  
 Edna Hicks  
 Lucille Harris  
 Mary Anne Horton  
 Susie Leggett  
 Sara Louise Logan

Margaret Milam  
 Hope Maxwell  
 Laura Helen Moseley  
 Mrs. Willola Nason  
 Zilpha Reese  
 Margaret Starnes  
 Melva Taylor  
 Mattie Upchurch  
 Charleen Webb

Charlcie Willis

# ELEMENTARY CLUB

## FIRST TERM OFFICERS

MINNIE FOX . . . . .	President
NANCY LEIGH . . . . .	Vice President
VIRGINIA KING . . . . .	Secretary

## SECOND TERM OFFICERS

VIRGINIA KING . . . . .	President
KITTY ODOM . . . . .	Vice President
WILMA PITTMAN . . . . .	Secretary
MARY FURR NEWELL . . . . .	Reporter
MISS JANE OLIVER . . . . .	Sponsor

Sadie Ruth Abernathy  
 Ellen Bradley  
 Ruth Doolittle  
 Julia Gregory  
 Elizabeth Harthcock  
 Ann James  
 Betty Kilpatrick  
 Louise Kimbrough  
 Betty Jean Lang  
 Geraldine Marble

Mary Furr Newell  
 Kitty Odom  
 Wilma Pittman  
 Eunice Rice  
 Annie Glenn Williams  
 Kathleen Wood  
 Miss Maud Cain  
 Miss Mary Royce Eckles  
 Miss Martha Myers  
 Miss Lucille England





## Y. W. C. A.

MARY EMMA BOGGAN . . . . . President

KATHRYN DENMAN . . . . . Vice President

NANCY LEIGH . . . . . Secretary, Treasurer

PHYLLIS RYALS . . . . . Program Chairman

RUTH DOOLITTLE . . . . . Program Chairman

MISS MARTHA SCHREINER . . . . . Faculty Sponsor



## SCRIBES CLUB

MARY EMMA BOGGAN . . . . . Chief Scribe

MISS EVELYN HAMMET . . . . . Faculty Sponsor

Claire Slay

Janis Hathorn

Betty Oakman

Frances Wilkerson



## THE BAND

FRANK G. WALICK . . . . . Director  
GRACE KELLY . . . . . Assistant Director  
MINNIE FOX . . . . . Assistant Director

### CORNETS

Bennie Beach  
Mary Ann Brown  
Kathryn Denman  
Elizabeth Gardner

### CLARINETTS

Minnie Fox  
Robert Simpson  
Mary Sue Brown  
Joyce Denman  
Sue Tims  
Lucille Harris  
Margaret Milam

### FLUTES

Margaret Brokaw  
Viola Parks

### SAXOPHONES

Gavin Scott  
Violet Wachter

### HORNS

Charles Tucker

### BARITONE

Claire Lowry  
Charles Reid

### BASSES

Lillye Love Kimbrough  
Nell Roberts

### DRUMS

Grace Kelly  
Willola Nason





## DELTA SINGERS

VIRGINIA KING . . . . .	President
PEARL HITCH . . . . .	Business Manager
CLAIRE LOWRY . . . . .	Secretary, Treasurer
LILLYE LOVE KIMBROUGH . . . . .	Accompanist
MRS. PAUL R. GERARD . . . . .	Director

### FIRST SOPRANOS

Margaret Starnes  
Marjorie Crook

Virginia King  
Eleanor Walters

### SECOND SOPRANOS

Ellen Bradley  
Minnie Fox  
Lucille Harris

Pearl Hitch  
Louise Kimbrough  
Rachel Stubbs

Billie Rossie

### ALTOS

Mary Ann Brown

Mary Sue Brown  
Claire Lowry



## WOMEN'S ATHLETIC ASSOCIATION

NANCY LEA LEIGH . . . . .	President
VERA SMITH . . . . .	Vice President
PHYLLIS RYALS . . . . .	Secretary, Treasurer
MARTHA ANN JEPSON . . . . .	Reporter
MISS ETHEL CAIN . . . . .	Faculty Sponsor

### ATHLETIC CAPTAINS

DOT BARKEMEYER . . . . .	Cleveland Hall
KATHRYN WATSON . . . . .	Ward Hall
HARRIETT CAUSEY . . . . .	Town Girls

### MEMBERS

Virginia King  
 Myra Langston  
 Margaret Sorrells  
 Kathryn Denman  
 Annie Glenn Williams  
 Gerry Marble  
 Dorothy Pigg  
 Martha Ann Jepson  
 Harriet Causey

Lillye Love Kimbrough  
 Betty Aldridge  
 Margaret Brokaw  
 Laura Byrd Campbell  
 Elizabeth Gardner  
 Peggy McKee  
 Margaret Milam  
 Laura Helen Moseley  
 Joye Sorrell

Charlcie Willis

# MISS DELTA

## EXECUTIVE STAFF

FRANCES RYALS . . . . .	Managing Editor
MARGIE SNIPES . . . . .	Senior Editor
ALICE CAUSEY . . . . .	Senior Editor
JANE HATHORN . . . . .	Senior Editor
MARY EMMA BOGGAN . . . . .	Feature Editor
BARBARA JOHNSON . . . . .	News Editor

## REPORTIAL STAFF

Claire Lowry	Gerry Goodson
Dot Barkemeyer	Harriet Causey
Claire Slay	Janis Hathorn
Billie Rossie	Charles Reid
Myra Langston	Virginia Davis
	Martha Ann Jepson

## BUSINESS STAFF

MARY ANN BROWN . . . . .	Assistant Business Manager
BILL GARDNER . . . . .	Advertising Manager
DR. K. L. DAUGHRITY . . . . .	Faculty Sponsor

## ADMINISTRATIVE CONSULTANTS

Miss Evelyn Hammett	Miss Virginia Thompson
---------------------	------------------------





## FRENCH CLUB

ALICE CAUSEY . . . . .	President
BILLIE ROSSIE . . . . .	Vice President
JANIS HATHORN . . . . .	Secretary, Treasurer
MISS MARTHA SCHREINER . . . . .	Faculty Sponsor

Mary Emma Boggan  
 Camille Brocato  
 Harriet Causey  
 Marjorie Crook  
 Virginia Davis  
 Dorothy Doolittle  
 Jane Hathorn  
 Gloria Henry

Martha Ann Jepson  
 Lillye Love Kimbrough  
 Claire Lowry  
 Kitty McReynolds  
 Ruth Peeples  
 Margaret Stiles  
 Sue Tims  
 Charles Tucker

Catherine Williams



## COMMERCIAL CLUB

BILLY GARDNER . . . . .	President
KATHRYN DENMAN . . . . .	Vice President
MYRA LANGSTON . . . . .	Secretary
DOT BARKEMEYER . . . . .	Treasurer
FRANCES RYALS . . . . .	Reporter
MR. J. W. BEDWELL . . . . .	Faculty Sponsor

Harriet Causey  
 Mable Causey  
 Russell Crutcher  
 Joyce Denman  
 Elizabeth Gardner  
 Grace Garrick  
 Emma Lee Hauff  
 Miriam Hawkins  
 James Litton  
 Peggy McKee  
 Hale Norwood

Dorothy Pigg  
 Eunice Rice  
 Emma Lou Rustin  
 Phyllis Ryals  
 Vera Smith  
 Joye Sorrell  
 Gloria Streete  
 Louise Stubblefield  
 Sis Turner  
 Kathryn Watson  
 Catherine Williams

Annie Glenn Williams

## DELTA PLAYHOUSE

DINKS KORNEGAY . . . . .	President
JANE HATHORN . . . . .	Vice President
GRACE KELLY . . . . .	Secretary, Treasurer
MARY ROBERTS CAMPBELL . . . . .	Historian
BILLIE ROSSIE . . . . .	Electrician
MARGIE SNIPE . . . . .	Stage Manager
MRS. LOUISE PERRY . . . . .	Director

### MEMBERS

Dot Barkemeyer	Myra Langston	Connie Scott
Alice Causey	Claire Lowry	Catherine Williams
Gerry Goodson	Ruth Oridge	Rea Thweatt
Janis Hathorn	Frances Ryals	Margaret Sorrells
Pearl Hitch		

### PLEDGES

Martha Ann Jepson, Mattie Upchurch, Claire Slay, Gerry Marble, Annie Glenn Williams, Elsie Boschert, Susie Leggett, Charlcie Willis, Zilphia Reese, Barbara Johnson, Peggy McKee, Kathleen Wood, Nell Barham, June Gardner, Margaret Brokaw, Charlie Webb, Virginia Davis, Betty Kilpatrick, Juanita Boykin, Betty Oakman, Harriet Causey, Kathryn Denman, Dorothy Pigg, Kathryn Watson, Phyllis Ryals, Melva Taylor, Margaret Starnes, Margaret Stiles, Laura Byrd Campbell, Billy Smith, John Fraiser.







## ALPHI PSI OMEGA

MARGIE SNIPES . . . . . Grand Director

DINKS KORNEGAY . . . . . Grand Stage Manager

GRACE KELLY . . . . . Grand Business Manager

Jane Hathorn

Pearl Hitch

Connie Scott

MINNIE FOX . . . Assistant Editor  
 ELSIE BOSCHERT . . Asst. Bus. Mgr.  
 CLAIRE LOWRY . . . Art Editor  
 RUTH TAYLOR . . . Art Editor  
 BARBARA JOHNSON . Activities Editor  
 VERA SMITH . . . Athletics Editor  
 GRACE KELLY . . . Senior Editor  
 VIRGINIA KING . . . Junior Editor  
 MARY EMMA BOGGAN  
                             Sophomore Editor  
 JOANNE CHORLEY . Freshman Editor  
 CHARLES REID . . . Photographer  
 JAMES LITTON . . . Photographer



RUTH ORIDGE  
 Editor

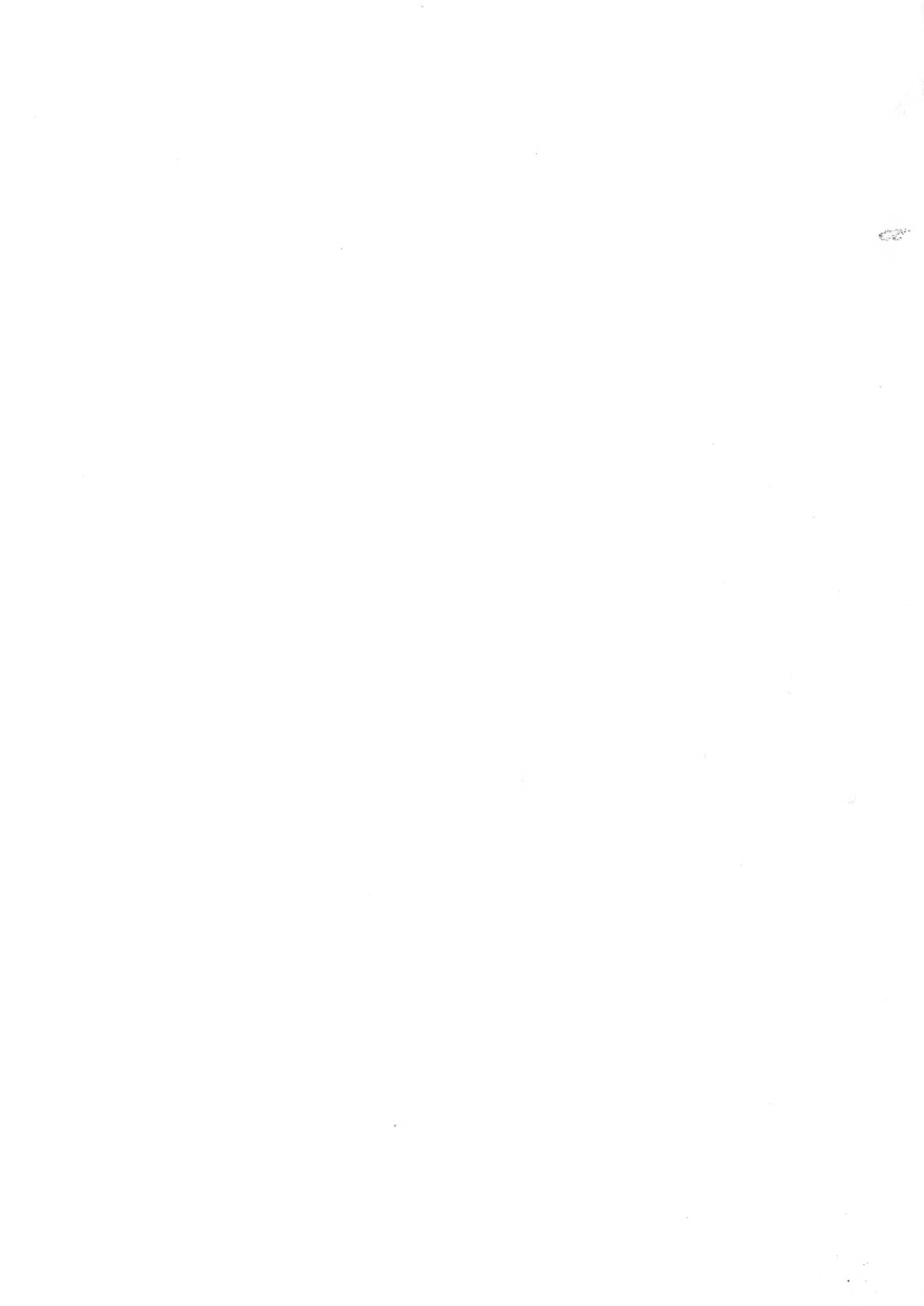


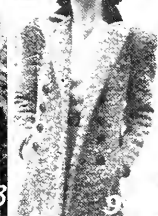
DINKS KORNEGAY  
 Business Manager

## THE 1944 BROOM









1. Agnew comes visiting. 2. Waiting for a streetcar? 3. Perfect posture. 4. Airplanes. 5. Let's be friends. 6. Too bad about Boot. 7. Cooperation. 8. Shorty and Doolittle take a stroll. 9. A smile from Mary Emma. 10. It finally came. 11. It's time for the bell. 12. Look's natural, doesn't it? 13. Suite mates. 14. Gas rationing.



1. Homeward from classes. 2. Homecoming. 3. Practice teachers arrive. 4. Our beauties. 5. Hold the door, Gloria. 6. They've got a man. 7. Not so serious. 8. Candid camera shot. 9. Studious frosh. 10. Our little ones. 11. Anderson has been here since Delta State began.



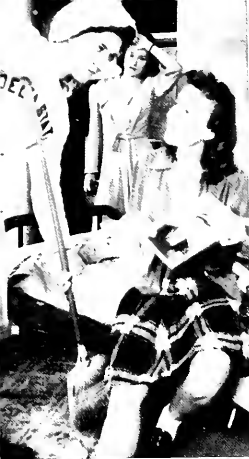
1. Cleveland Hall mamas. 2. Laundry day. 3. The gang's all here. 4. Upper classmen 'd them dirty. 5. Let's move this shrub. 6. Waiting for someone, Charlie? 7. On parade. 8. Taylor block pr nts. 9. Freshman Brokaw. 10. Edna views her surroundings. 11. Sleepy? 12. Champ. 13. Got a light, Bud? 14. Men don't gossip. 15. Tired? 16. See the fishes? 17. Don't fall in.





1. The pause that refreshes. 2. The fleet's in. 3. Cokes are rationed, too. 4. No black marketings, boys. 5. Swing it, Tucker. 6. Careful, Hope. 7. Hangout. 8. Don't break that trombone. 9. A welcome transfer. 10. Going home for the weekend. 11. In step, imagine!!





1. Labor shortage. 2. Little Foxes perform. 3. Snow and books just don't mix, Camille. 4. Cold weather. 5. Pneumonia hazard. 6. Grace? 7. Pose from VOGUE. 8. "Miss Delta" at work. 9. Friends of ours. 10. Funny, huh? 11. Don't let it get you down. 12. Bag in hand. 13. Home Ec needle work. 14. Four leaf clovers in December? 15. Old Mother Hubbard.



1. Informal concert. 2. A couple at Delta State? Hard to believe. 3. Caught at the door. 4. Attention! 5. Pass that ammunition. 6. Wild Bill. 7. Here we go round. 8. "Lady Be Fit". 9. What a crowd. 10. Life saving. 11. Baskets into hats. 12. Doris goes to work. 13. Buy more Bonds and Stamps.



1. How's your I. Q.? 2. A frown and a smile? Let's get together. 3. Uncle Sam gets the mail to Joyce. 4. The bell rings. 5. Really, Alice? 6. That your dog? 7. A penny for your thoughts, Violet. 8. Beneath Old Glory. 9. Before Todd left. 10. Lunch time. 11. Aquatics. 12. How about a schedule, Miss Mauldin? 13. Freshman Day. 14. MADEMOISELLE. 15. What faces you're making. 16. Mayhall looks happy.



1. Hang on, Billy. 2. Bond rally. 3. Claire dances for her dinner. 4. Dem. School marches. 5. Silly Sophomores. 6. Where's Chet, Miss Hammett? 7. Kick it! 8. Why so solemn? 9. Relaxation before lunch. 10. School's out for today. 11. Swing high. 12. Men!!!!

Compliments

of

**THE CLEVELAND STATE BANK**

**Cleveland, Mississippi**



# **MISSISSIPPI DELTA STATE TEACHERS COLLEGE**

\*\*\*\*\*

**A Standard Four Year Institution for Higher Education, Offering  
Equal Opportunities to Young Men and Women**

**CLEVELAND, MISSISSIPPI**

**In the Heart of the Mississippi Delta**

\*\*\*\*\*

**Write for Catalogue.**

**Address:**

**THE REGISTRAR  
Delta State Teachers College  
Cleveland, Mississippi**

Compliments of

**Sterling  
Department Store**

Cleveland  
Mississippi

Compliments of

**Cleveland Laundry  
and Cleaning  
Company**

♦♦♦♦

WE APPRECIATE YOUR  
PATRONAGE

♦♦♦♦

Phone 230  
Cleveland, - - Mississippi

**Federal Compress  
and  
Warehouse**

SERVICE IMPARTIALLY  
RENDERED

♦♦♦♦

Cleveland, - - Mississippi

Eat

DENTON'S QUALITY  
ICE CREAM

**The Denton  
Manufacturing  
Company**

Cleveland, Shelby,  
Mississippi

Compliments of

**BOOTS JONES**  
**Cotton Buyer**



Cleveland. - - Mississippi

**The Bolivar**  
**Commercial**

JOB PRINTING  
OFFICE SUPPLIES

Cleveland. - - Mississippi

LADIES'  
READY-TO-WEAR

**HYTKIN'S**

Cleveland. - - Mississippi

**THE PARISIAN**

Headquarters for  
Delta State Coeds.

AIR CONDITIONED

Cleveland. - - Mississippi

**MORGAN**  
and  
**LINDSEY**

Stores of Courtesy

Showing a Complete Line of

MERCHANDISE

From 5c to \$1.00

Compliments of

**LEVINGSTON'S**  
**FURNITURE**  
**STORE**

Cleveland. - - Mississippi



**OWEN'S  
DRUG STORE**

**J. H. Owen, Proprietor**



Coca-Cola      Prescriptions

Sundries

Phone 166      Delivery



Cleveland.   -   -   Mississippi

Compliments of  
**Nehi Bottling Co.**  
Cleveland.   -   -   Mississippi

**The  
College Inn**  
Cleveland.   -   -   Mississippi

**I. A. KAMIEN**  
Foot Fashion Shoes, Shirtcraft  
Shirts. Complete Stock of La-  
dies' Ready-To-Wear and  
Men's Clothes  
Cleveland.   -   -   Mississippi

**NELSON'S  
FIRESTONE  
STORE**

Quality Merchandise at Prices  
You Can Afford

Cleveland.   -   -   Mississippi

Compliments of the  
**ESQUE COMPANY**  
Everything for Men  
Cleveland.   -   -   Mississippi

Compliments of  
**Post Office Cafe**  
Cleveland.   -   -   Mississippi

Compliments of  
**DELTA  
HARDWARE  
AND IMPLEMENT  
COMPANY**  
Cleveland.   -   -   Mississippi

**KOSSMAN BUICK  
COMPANY**

We Service All Makes of Cars  
and Trucks

New Phonographs Records  
Received Weekly

Phone 600

Cleveland, - - Mississippi

Compliments of  
**C. W. CAPPS AND  
COMPANY**

COTTON BUYERS

Cleveland, - - Mississippi

Compliments of  
**DIXI STAR  
BAKERY**

FRED L. MUSE, Proprietor

Phone 42

Cleveland, - - Mississippi

Compliments of  
**SHOENHOLZ  
DEPARTMENT  
STORE**

EVERYTHING TO WEAR

Cleveland, - - Mississippi

Compliments of

**De LOACH'S**

Ladies' Ready-to-Wear and  
Accessories

♦♦♦♦

312 Howard Street

Greenwood, - - Mississippi

**CLEVELAND  
SERVICE  
STATION**

Phone 131

SINCLAIR PRODUCTS

Everything for the  
Modern Motorist

**WARD-ELLIS**  
**The Rexall Store**  
Whitman's and Pangburn's  
**FINE CANDIES**  
Cleveland, - - Mississippi

**PACE SEED SUPPLY**  
**COMPANY**  
**SEED, FEED AND**  
**FERTILIZERS**  
Cleveland, Indianola

Compliments of  
**O. P. GOOCH**  
  
**COTTON BUYER**

Cleveland, - - Mississippi

Compliments of  
**GOYER OIL**  
**COMPANY**

Compliments of  
**THIRD FLOOR OF**  
**CLEVELAND HALL**  
Fox, Hathorn, Pearl, Crook,  
Oridge, Snipes, Taylor, O'Neal,  
Figg, Roberts, Kelly, Dinks

**HOTEL GROVER**

A Good Hotel In A Good Town

Cleveland, - - Mississippi

Compliments of  
**T. M. JONES**

**COTTON BUYER**

Cleveland, - - Mississippi

Compliments of  
**GULF SERVICE**  
**STATION**

Cleveland, - - Mississippi

Compliments of  
**HAMBURGER**  
**INN**

Cleveland, - - Mississippi

**WEST**  
**IMPLEMENT**  
**COMPANY**

John Deer Quality  
**FARM EQUIPMENT**

Cleveland, - - Mississippi

Compliments of  
**JOEL AND BERGMAN**  
**THE SHOE MEN**  
Telephone 730

Greenville, - - Mississippi

**HILL'S CLEANERS**  
**AND TAILORS**

Telephone 33  
Cleveland, - - Mississippi

Compliments of

**THE MODERN  
STORE**

THE VERY BEST  
IN GROCERIES



Cleveland, - - Mississippi

Compliments of

**C. E. JORDAN  
FURNITURE  
COMPANY**

\*\*\*\*\*

SERVING THE  
DELTA

\*\*\*\*\*

Cleveland, - - Mississippi

Compliments of

**SILBERNAGEL  
AND  
COMPANY**

\*\*\*\*\*

Pine Bluff, Dermott,  
Arkansas

Compliments of

**NELMS & BLUM**

Greenville, - - Mississippi

\*\*\*\*\*

BECAUSE YOU WANT  
THE FINEST

Compliments  
of  
**CONTINENTAL BAKING COMPANY**

Bakers of  
**WONDER BREAD      HOSTESS CAKE**

**Clarksdale, Mississippi**

**TOBE KAPLAN'S  
MEN SHOP**

♦♦♦♦

**EVERYTHING FOR THE  
WELL DRESSED MAN**

♦♦♦♦

**Cleveland.   -   -   Mississippi**

**TOBE KAPLAN'S  
KAY'S  
STYLE SHOP**



**EXCLUSIVE LADIES' WEAR**



**Cleveland.   -   -   Mississippi**

**PLANTERS  
EQUIPMENT  
COMPANY**

---

McCormick-Deering  
FARM MACHINES,  
IMPLEMENTS AND  
TRUCKS

---

Cleveland, - - Mississippi

Compliments of  
**5 AND 10  
SANDWICH BAR**

THE BEST PLACE TO EAT

Phone 336

Cleveland, - - Mississippi

Compliments of  
**ROBB  
INSURANCE  
AGENCY**

GENERAL INSURANCE

Cleveland, - - Mississippi

Compliments of  
**THE MODERN  
BEAUTY SHOPPE**

THE VERY BEST IN HAIR  
STYLES AND PERMANENTS

Phone 44

Cleveland, - - Mississippi

**CARL C. DAVIS  
PRINTING &  
PUBLISHING  
COMPANY**

Printers, Stationers,  
Office Supplies, Furniture  
THE  
BOLIVAR COUNTY NEWS

Compliments of  
**Norwood Brown**

**BOLIVAR  
INSURANCE  
COMPANY**

Cleveland, - - Mississippi

## **NOWELL LUMBER COMPANY, Inc.**

**BUILD HOME**

**BE HAPPY**

**BUILDING MATERIAL**

**PLUMBING SUPPLIES**

**TELEPHONE NUMBER 11**

**Cleveland, Mississippi**

## **THE GOYER COMPANY**

**WHOLESALE GROCERS**

**MANUFACTURERS OF PURE GOLD COFFEE**

**DISTRIBUTORS OF OMEGA FLOUR**

**MODERN COLD STORAGE**

**WISHING A BRIGHT FUTURE FOR . . .**

**DELTA STATE COLLEGE**

**\*\*\*\*\***

**Compliments of**

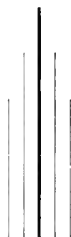
**M. L. VIRDEN LUMBER COMPANY Inc.**

**THE COLLEGE BOOKSTORE**

**THE PLACE TO MEET YOUR FRIENDS BETWEEN CLASSES**

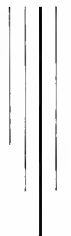
**Books    :-    Supplies    :-    Confections**





EXTENDING OUR APPRECIATION  
TO THE FACULTY AND STUDENT BODY  
FOR THEIR COOPERATION  
IN HELPING US TO PRODUCE  
THE PHOTOGRAPHIC WORK IN THIS ANNUAL

YVETTE McGOWAN, PHOTOGRAPHER  
Hattiesburg, Mississippi



**WE ARE ALWAYS GLAD TO  
SERVE YOU WITH OUR  
TRANSPORTATION**

**(3) Schedules daily from:  
Rosedale to Cleveland**

**Ar. in Cleveland 7:45 A. M.,  
10:35 A. M., 3:50 P. M.**

**(3) Schedules daily from:  
Cleveland to Greenwood**

**Lv. Cleveland 8:00 A. M., 10:40  
A. M., 4:00 P. M.**

**Ar. in Greenwood 9:38 A. M., 12:40  
A. M., 5:33 P. M.**

**Delta Transportation  
Company**

**1017 N. Broadway**

**Greenville, - - Mississippi**

**THE ELLIS  
AND  
THE REGENT  
Theatres**

**BILL ELLIS, Proprietor**

**\*\*\*\***

**Cleveland, - - Mississippi**

**Compliments**

**of**

**THE 1944 BROOM STAFF**

**DELTA STATE TEACHERS COLLEGE**

**Cleveland, Mississippi**

*For* 40 *Years*

DESIGNERS AND  
CREATORS OF...

*Fine Printing*

The Paragon Press

FOURTEEN ADAMS AVENUE, MONTGOMERY, ALABAMA



# *Ready to Face the World*

★ ★ *COME WHAT MAY.*

*CONFIDENCE* is the heritage of youth . . . . it is also a fundamental requirement of business . . . . attained by long study, training and experience • We have enjoyed the confidence of yearbook Staffs throughout the country for over thirty years . . . . an accomplishment for which we are truly grateful and justly proud . . . .

★ ★ ★ ★ ★  
**COLLEGE ANNUAL DIVISION**  
**ALABAMA ENGRAVING COMPANY**  
**BIRMINGHAM**







